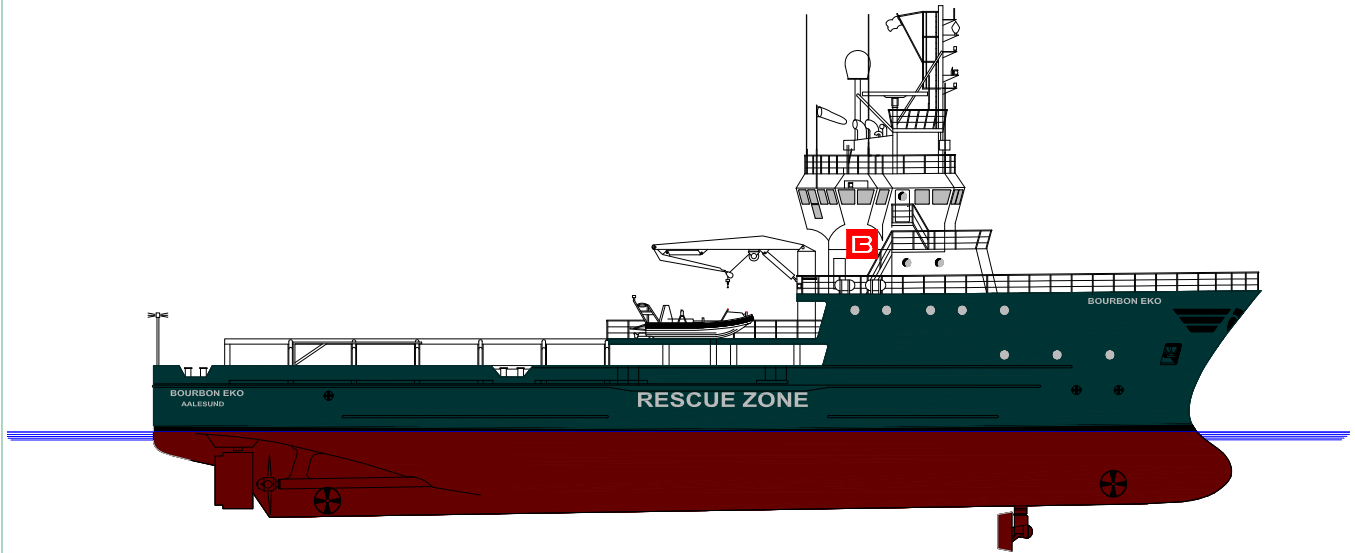




# BOURBON EKO

Platform supply vessel  
Stand-by rescue  
2,099 t deadweight

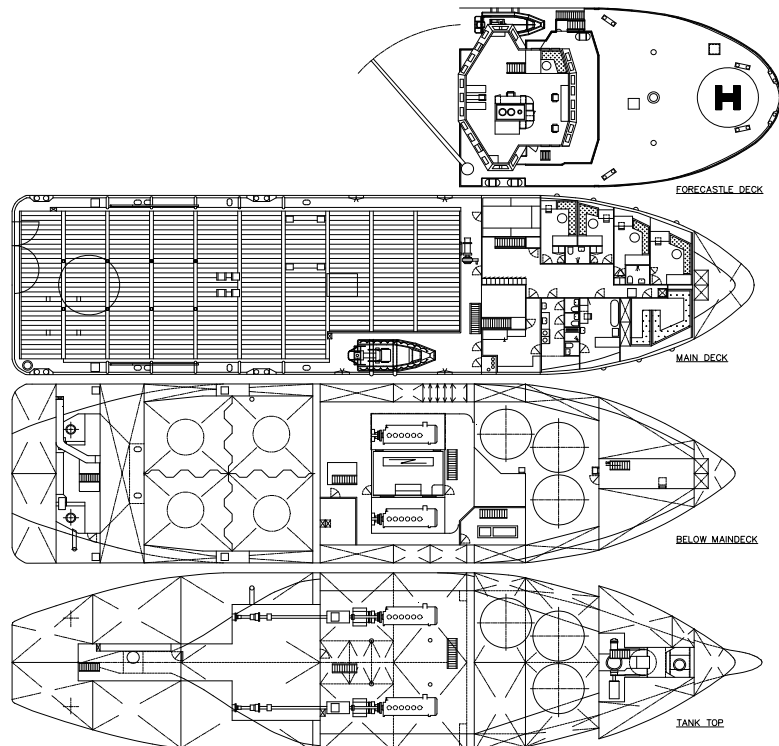


The BOURBON EKO is a multipurpose subsea services and platform supply vessel.

The vessel is designed for worldwide, deep water operations to fulfill the following duties:

Transportation of liquid products, deck cargo and other equipment for drilling and production support Subsea services.

Equipped for Stand-By Rescue



PLATFORM SUPPLY VESSEL

## REGISTRATION

Vessel Name: **BOURBON EKO**

Type: **PSV Stand by rescue**

Year: **1992**

Owner: **Bourbon Offshore Norway**

Builder: **Zhejiang (China)**

Class: **DNV + 1A1, SF, EO, Oil rec, DK (0,5), HL (2,5).**

Flag: **Norwegian**

Updated: 15-07-2009



### MAIN PARTICULARS

#### DIMENSIONS

Length overall:	63.00m
Breadth moulded:	15.00m
Depth:	7.00m
Draft:	5.50 m
Deadweight:	2.099 t
Gross tonnage:	1.673
Net tonnage:	528

#### CAPACITIES

Deck area:	(12.3 x 35.8) 420 m2 with 5 t/m2
Deck cargo:	600 t
Fuel oil:	779 m3
Drill water:	650 m3
Fresh water:	329 m3
Liquid mud, Brine:	527 m3
Dry Bulk/Cement:	168 m3

#### DELIVERY RATES

Fuel oil:	100 m3/h at 9 bars
Drill water:	100 m3/h at 9 bars
Fresh water:	100 m3/h at 9 bars
Liquid mud, Brine:	60 m3/h at 24 bars
Dry Bulk/Cement:	23m3/min at 5.6 bars

#### ACCOMMODATIONS

Accommodations for:	20 pers
Single cabins:	2
2 man cabins:	7
4 man cabins:	1
Hospital:	1
Mess / day rooms, laundry, galley, store.	
Fully air conditioned.	

### MACHINERY / PERFORMANCE

#### PROPULSION - MACHINERY

Main engines:	2 x 1,864 kW
Propellers:	Z drive, fixed pitch, 360 degrees
Bow thrusters:	596 kW Tunnel
Compass thruster forward:	745 Kw
Stern thruster:	596 kW Tunnel
Main generators:	2 x 2170 kW
Auxilliary generators:	2 x 395 kW
Emergency generator:	30 kW

#### SPEED / CONSUMPTION

Maximum speed (100%):	21.8 m3/day at 15 knots
Economic speed:	14.8 m3/day at 11.5 knots

### EQUIPMENT & ELECTRONICS

#### DECK EQUIPMENT

Tugger:	1 x 5 t
Capstans:	1 x 3 t
Deck provisions crane:	3 t at 12 m

#### SPECIAL/RESCUE EQUIPMENT (250 survivors.)

MOB boats: 2x 10 persons each.  
Life rafts with equipment.  
Survival suits.  
Radar transponders..

#### ELECTRONICS

##### - NAVIGATION

2 radars X Band / 1 radar S Band
1 gyrocompass
1 magnetic compass
1 digital echo-sounder
1 speed log
1 autopilot system
1 GPS

##### - COMMUNICATION

1 MF/HF radio system compliant with GMDSS A2
1 DSC Watchkeeping receiver

*All particulars believed to be correct but not guaranteed*