



BOURBON ENTERPRISE - MPSV

DP2 Multi-Purpose support vessel
8 points mooring
2,000 t deadweight



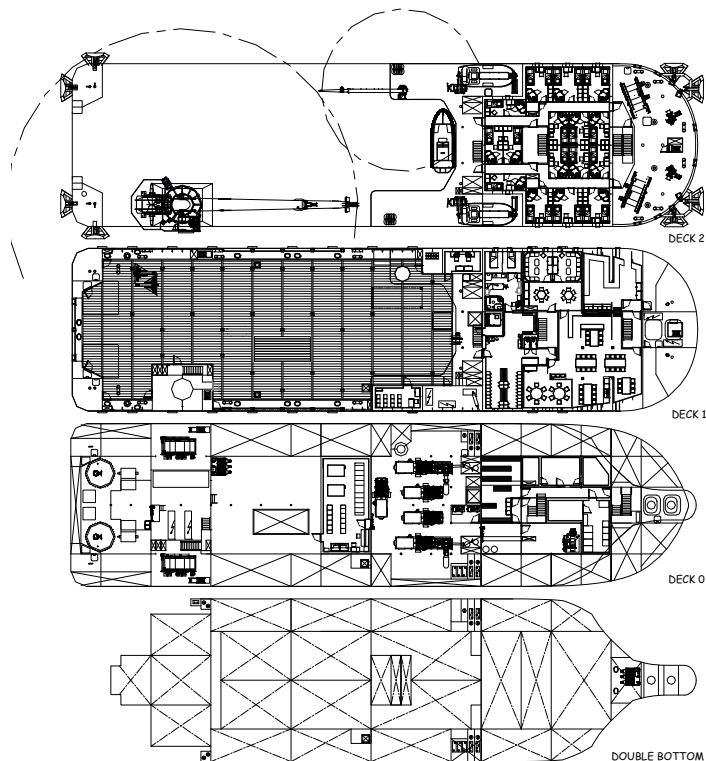
BOURBON ENTERPRISE is a multi-purpose supply vessel designed by Socarenam.

This DP2 Diesel electric vessel is designed as a floating support for offshore works.

It is equipped with a eight-points mooring system, Fi-Fi I system and also has accommodations for 103 persons.

It is designed :

- Platform maintenance support.
- Flotel support.
- Light subsea work.
- ROV support.



MULTI PURPOSE SUPPORT VESSEL

REGISTRATION

Vessel Name: **BOURBON ENTERPRISE**

Year: **2009**

Owner: **Bourbon Offshore**

Flag: **French**

Class, Bureau Veritas: **I X HULL X MACH, Special service offshore support, Unrestricted navigation, X AUT-UMS, X ALM, X DYNAPOS-AM/AT-R, Fire-Fighting Ship 1 - Water Spraying**

Updated: 12-11-2009



TECHNICAL SPECIFICATIONS

MPSV - BOURBON ENTERPRISE



MAIN PARTICULARS

DIMENSIONS

Length overall:76.00 m
 Breadth moulded:19.50 m
 Depth:5.50 m
 Draft:.....3.80 m
 Deadweight at max. draft:2,000 t

CAPACITIES

Clear deck area:720 m²
 - (369 m² @ 5 t/m², fore deck) & (351 m² @ 10 t/m², aft deck)
 Max deck load:1,300 t
 MDO (cargo & service):600 m³
 Fresh water:.....779 m³
 Sea water ballast:1,269 m³
 Brine/Mud (dual included in water ballast capacity).....401 m³
 Foam:8.6 m³

TRANSFER

Fuel:.....80 m³/h @ 9 bars
 Brine/Mud:80 m³/h @ 9 bars
 Ballast water:150 m³/h @ 2 bars

ACCOMMODATIONS

Accommodations for (crew: 25/special pers:78).....103 pers
 Single cabins:9
 2 man cabins:35
 4 man cabins:6
 Meeting rooms:7
 Conference room: (20 pers).....1
 Hospital:1
 Mess rooms:2
 Recreation/TV rooms:4
 Laundry:1
 Galley:1
 Workshop:2
 Change room:1

MACHINERY / PERFORMANCE

PROPULSION - MACHINERY

Main Diesel generators:4 x 910 kWe (1,316 hp x 4=5,264 hp)
 Propulsion: Stern azimuth thrusters, FP.....2 x 1,300 kW
 Bow tunnel thrusters:2 x 700 kW
 Auxiliary Diesel generator:1 x 910 kWe
 Emergency generator:1 x 95 kWe
 Working air compressor:1,206m³/h @ 8.6 bars

SPEED / PERFORMANCE

Maximum speed (100%):10 knots
 Endurance (approx):30 days

EQUIPMENT & ELECTRONICS

DECK EQUIPMENT

Main offshore deep water crane AHC knuckle boom SMST
 - 40t @ 9m - 20 t @ 21 m (harbour)
 - 40t @ 9m - 12 t @ 21 m (Offshore)
 - Man riding
 - Winch capacity: 1,500m of 48mm wire
 Deck crane knuckle boom TTS, 10 t @ 10 m
 Capstans:.....2 x 5 t pull each @15 m/min
 Tugger winch:.....1 x 10 t pull @15 m/min
 8 points mooring system: 4 electric/hydraulic type mooring winches with double drum in waterfall arrangement.
 Both drums under spooled c/w spooling device.
 - Drum capacity: (each) 1,200 m of 36 mm dia. galva wire rope , Inner layer 40T @ 10m/min, break 90T inner layer, 43T outer layer.
 Stabilising equipment: Passive roll reduction tanks
 1 workboat 640, aluminium hull, inboard Diesel engine with hydrojet Hamilton.

SAFETY EQUIPMENT

Fire Fighting 1: (remote controlled from wheelhouse)
 - 2 pumps 1,800 m³/h @ 14 bar each
 - 1 combined water/foam monitor 1,200 m³/h, foam 400 m³/h
 Water spray system
 2 totally enclosed lifeboats, inboard Diesel engine 21.3 kW
 - Speed: 6 knots, seating capacity: 40 persons (max 48 p)

ELECTRONICS

DYNAMIC POSITIONING (BV class 2, DYNPOS AM/AT-R)
 Reference systems
 2 DGPS receiver Saab R4 with:
 Seastar 3510 LR spotbeam receiver & inmarsat receiver
 1 DGPS Sagitta Thales
 2 Gyrocompasses
 2 vertical reference units
 2 wind sensors

NAVIGATION / COMMUNICATION

Equipment installed: (Zone A3, according to GMDSS requirements)

All particulars believed to be correct but not guaranteed

Bourbon Offshore - 148, rue Sainte - 13007 Marseille - France
 Internet: www.bourbon-online.com - E-mail: bourbon-offshore@bourbon-online.com